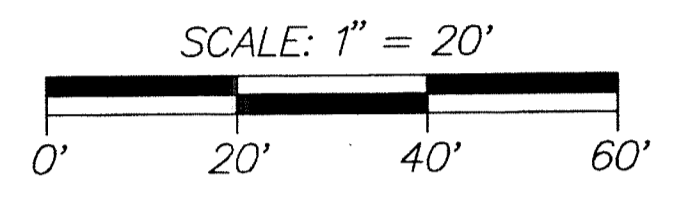


# THE GROVE AT LAKE IDA

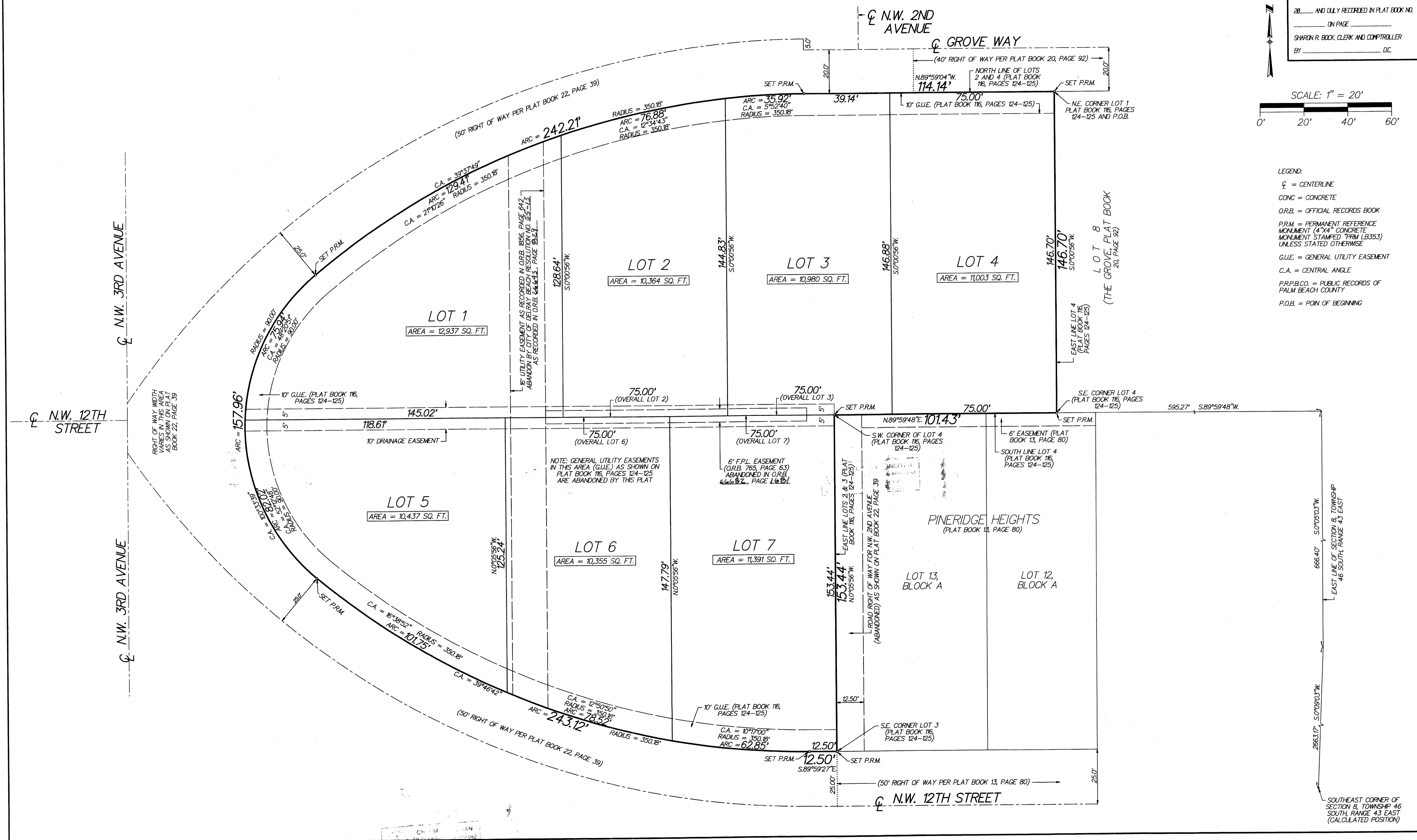
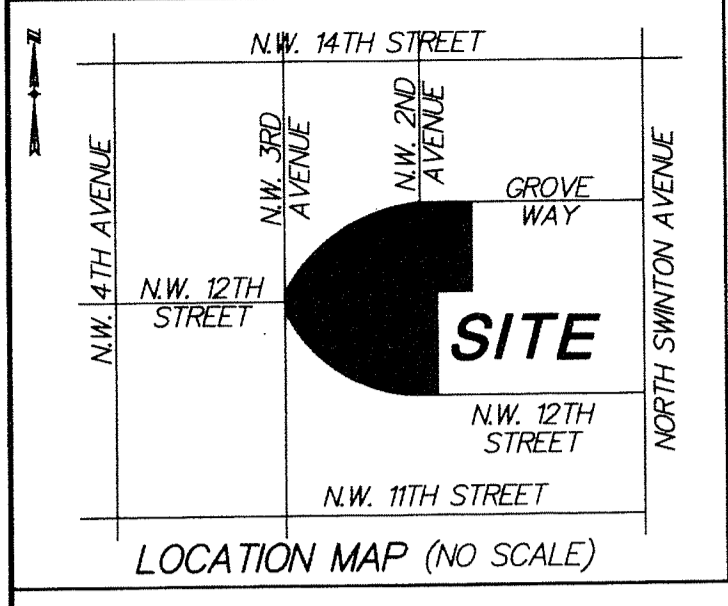
BEING A REPLAT OF LOTS 1 THROUGH 4, INCLUSIVE, MAISON DELRAY (PLAT BOOK 116, PAGES 124 AND 125, P.R.P.B.C.) BEING IN SECTION 16, TOWNSHIP 46 SOUTH, RANGE 43 EAST, CITY OF DELRAY BEACH, PALM BEACH COUNTY, FLORIDA

DECEMBER 2013  
SHEET 2 OF 2

COUNTY OF PALM BEACH  
STATE OF FLORIDA  
THIS PLAT WAS FILED FOR RECORD AT \_\_\_\_\_  
THIS \_\_\_\_\_ DAY OF \_\_\_\_\_  
20\_\_\_\_ AND DULY RECORDED IN PLAT BOOK NO. \_\_\_\_\_  
ON PAGE \_\_\_\_\_  
SHARON R. BOCK, CLERK AND COMPTROLLER  
BY \_\_\_\_\_ DC



- LEGEND:
- ☉ = CENTERLINE
  - CONC = CONCRETE
  - O.R.B. = OFFICIAL RECORDS BOOK
  - P.R.M. = PERMANENT REFERENCE MONUMENT (4"X4" CONCRETE MONUMENT STAMPED "PRM LB353") UNLESS STATED OTHERWISE
  - G.U.E. = GENERAL UTILITY EASEMENT
  - C.A. = CENTRAL ANGLE
  - P.R.P.B.C. = PUBLIC RECORDS OF PALM BEACH COUNTY
  - P.O.B. = POINT OF BEGINNING



CH: SF  
LAW  
DATE: 12/13/13  
BY: [Signature]

SOUTHEAST CORNER OF SECTION 8, TOWNSHIP 46 SOUTH, RANGE 43 EAST (CALCULATED POSITION)